

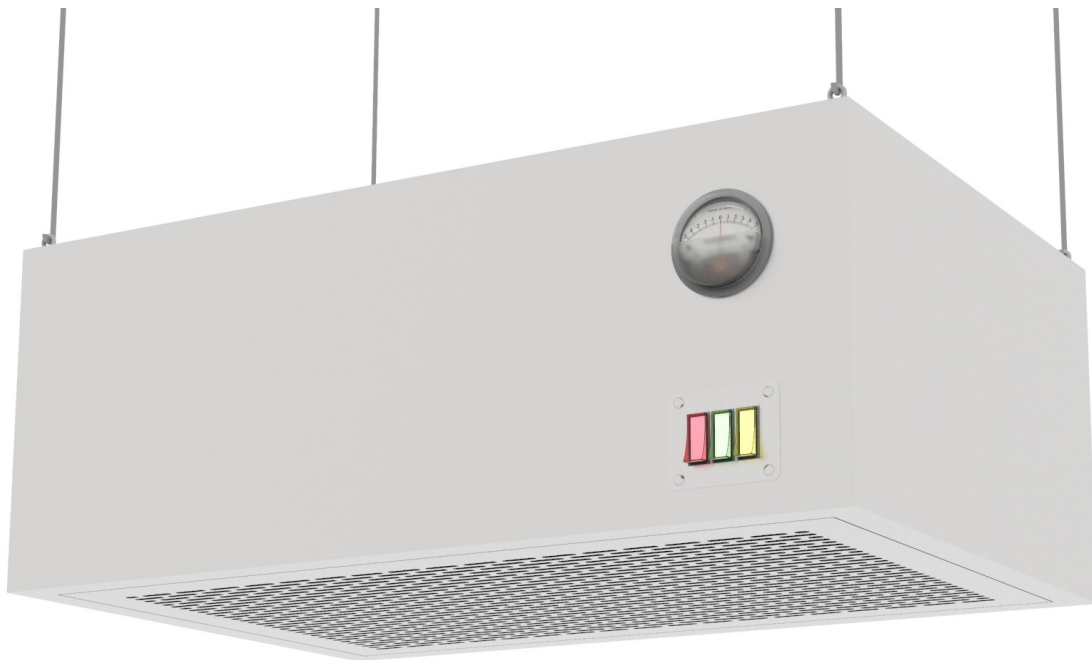


MEHROTRA  
**Biotech**

ADVANCE TECHNOLOGIES EFFECTIVE SOLUTION



**Elevate Clean Air with Our  
Ceiling-Suspended Laminar Airflow System**



## WHAT WE DO?

Mehrotra Biotech Pvt Ltd has been established with an aim to contribute to the enhancement of medical-hospital, pharmaceutical, biotechnological, and general laboratory services through the provision of high-quality innovative solutions, ensuring an improved quality of life and well-being for society at large.

Our primary objective is to deliver customized solutions that precisely align with the unique requirements of our customers. To achieve this, our dedicated functions including engineering, R&D, manufacturing, and customer service are focused on each technology within Mehrotra Biotech's area of expertise:

- We offer solutions and equipment for clean air technology, encompassing both horizontal and vertical laminar flow cabinets, biological safety cabinets, and laminar flow systems.
- Our portfolio includes solutions and equipment for advanced sterilization utilizing Autoclaves, Ovens, and incubators.
- We specialize in solutions and equipment employing biological containment technology, such as containment isolators and sterile isolators.
- Additionally, we provide solutions and equipment utilizing freeze drying and vacuum drying technology, ranging from laboratory freeze dryers to GMP freeze dryers.

By offering these comprehensive solutions, we aim to continually improve and advance the various sectors we serve, ensuring the highest standards of quality, safety, and efficiency in medical and laboratory practices.

*“Our aim is to provide tailor-made solutions in strict accordance to the needs of customers.”*



## OUR MISSION

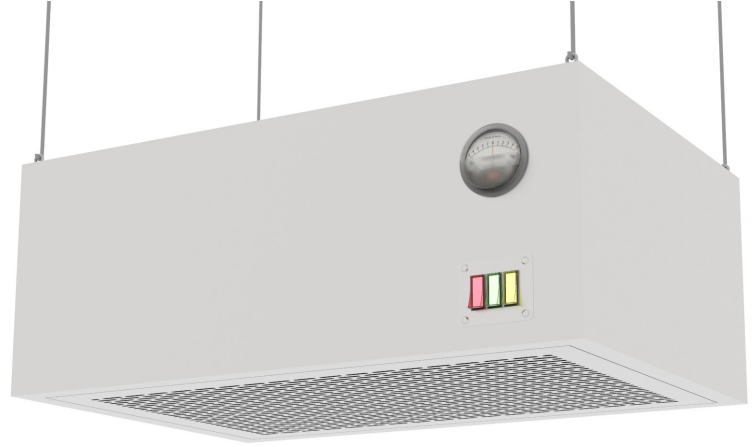
Our mission is to empower individuals and communities through innovative solutions and exceptional service. We are committed to providing high-quality products and services that address the needs of our customers and contribute to advancements in scientific and medical research. Guided by our core values of integrity, collaboration, and social responsibility, we strive to make a positive impact on society, while prioritizing environmental sustainability and community healthcare. Through our dedication to excellence and the expertise of our team, we aim to be a trusted partner in shaping a healthier and more prosperous future for all.

## OUR VISION

Our vision is to be a leading innovator and catalyst for positive change, creating solutions that transform lives and shape a better future. With a commitment to excellence, creativity, and social impact, we strive to revolutionize Biomedical research & Pharmaceutical industry through cut-edge design, forward-thinking strategies, and meaningful collaborations.

## EXPERIENCE THE DIFFERENCE OF CLEAN AIR

Mehrotra Biotech make **Ceiling suspended laminar airflow (CSLA)** systems are designed to provide a clean, controlled environment for critical applications in healthcare, pharmaceutical, and other industries. By delivering a gentle, downward flow of HEPA-filtered air, CSLA systems effectively remove airborne contaminants, creating a safe and healthy workspace.



## BENEFITS OF CSLA SYSTEMS

**Improved air quality:** CSLA systems remove up to 99.97% of airborne particles, including bacteria, viruses, and dust.

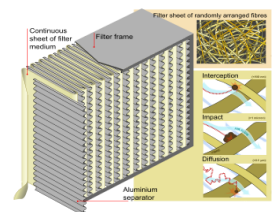
**Reduced risk of infection:** CSLA systems help to protect patients, staff, and products from airborne contaminants.

**Enhanced comfort:** CSLA systems provide a uniform, comfortable airflow that can help to reduce heat stress.

**Energy efficiency:** CSLA systems are designed for low energy consumption.

## FEATURES THAT ELEVATE CSLA SYSTEMS TO THE APEX OF CLEAN AIR SOLUTIONS

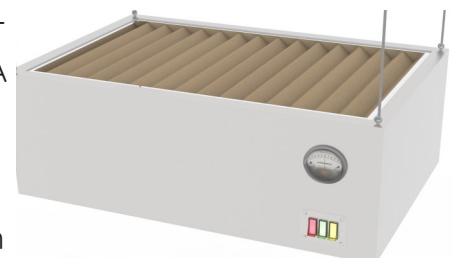
**HEPA-Filtration Excellence:** HEPA (High-Efficiency Particulate Air) filters are the heart of CSLA systems. Advanced HEPA filters capture even the most minute particles, ensuring exceptional air quality. . These filters are designed to remove up to 99.999% of airborne particles, including bacteria, viruses, and dust



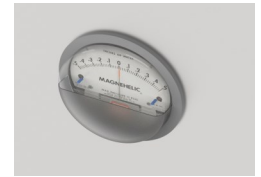
**Prefilters** are used to protect the HEPA filters from larger particles, such as dust, lint, and hair. This extends the life of the HEPA filters and helps to ensure that the CSLA system is operating at peak performance

**Plenum Design for Unobtrusive Efficiency:** The plenum design ensures a uniform distribution of airflow, maximizing coverage and minimizing air turbulence.

**Energy-efficient blowers** are used to draw air through the HEPA filters and distribute it throughout the workspace. These blowers are designed to minimize energy consumption while still providing the necessary airflow to maintain a clean environment.



A **magnehelic gauge** is used to measure the pressure difference between the upstream and downstream sides of the HEPA filters. This pressure difference is an indication of the amount of airflow passing through the filters.



**Stainless Steel Construction:** CSLA systems are typically made of stainless steel, which is a durable and easy-to-clean material. Stainless steel is also resistant to corrosion and other damage, making it a good choice for use in critical environments.

## A WIDE RANGE OF APPLICATIONS FOR DIVERSE INDUSTRIES

CSLA systems are the cornerstone of clean air solutions across a variety of industries:

**Healthcare:** Operating rooms, patient care areas, pharmaceutical cleanrooms

**Laboratories:** Microbiological labs, research and development facilities

**Electronics:** Semiconductor manufacturing, cleanroom environments

**Animal Research:** Animal housing areas, research facilities

## TECHNICAL SPECIFICATIONS

MODEL NO.	CSLA1500
OUTER DIMENSIONS (LxHxD)	1630 x 1330 x 700mm
MATERIAL OF CONSTRUCTION	STAINLESS STEEL SS304
MAIN LAMINAR FLOW FILTER	H14 HEPA FILTER □ 99.999% @0.3µm as per EN1822
PREFILTER	G3 TYPE upto 10µm FILTRATION
MAIN FILTER SIZE	1500x1200x69mm
BLOWER	DIRECT DRIVE 3 PCS ENERGY EFFICIENT BACKWARD CURVED AC BLOWER
CONTROLS	MANUAL ON OFF BUTTONS FOR FAN & TUBELIGHT
GUAGE	DIFFERENTIAL PRESSURE MAGNEHELIC GUAGE
ILLUMINATION	2X 36WATT LED BATTEN

## Why Choose CSLA Systems?

When it comes to protecting your critical environment, safeguarding health, and promoting productivity, **Mehrotra Biotech** make **CSLA** systems are the unequivocal choice. With their unparalleled air filtration, infection prevention, energy-efficient operation, and wide range of applications, **CSLA** systems provide the ultimate clean air solution.

**If you are looking for a clean air solution for your critical application, contact us today to learn more about CSLA systems.**



**Mehrotra Biotech Pvt. Ltd.**

**M&M TOWER B-22 23, VIBHUTI KHAND, GOMTI NAGAR, LUCKNOW- 226010**

Tel + 91 522- 2720663, 9838203520

E-mail: [sales@mehrotrabiotech.com](mailto:sales@mehrotrabiotech.com), [service@mehrotrabiotech.com](mailto:service@mehrotrabiotech.com).

Website: [www.mehrotrabiotech.com](http://www.mehrotrabiotech.com)

**OUR BRANCH OFFICES**

<b>LUCKNOW</b> ☎ 9335954424	<b>DELHI</b> ☎ 9899982221,8700206763	<b>MUMBAI</b> ☎ 9769173005	<b>HYDERABAD</b> ☎ 9911675755
<b>BANGALORE</b> ☎ 8123668899	<b>KOLKATA</b> ☎ 9543122965	<b>AHMEDABAD</b> ☎ 9925976439	

